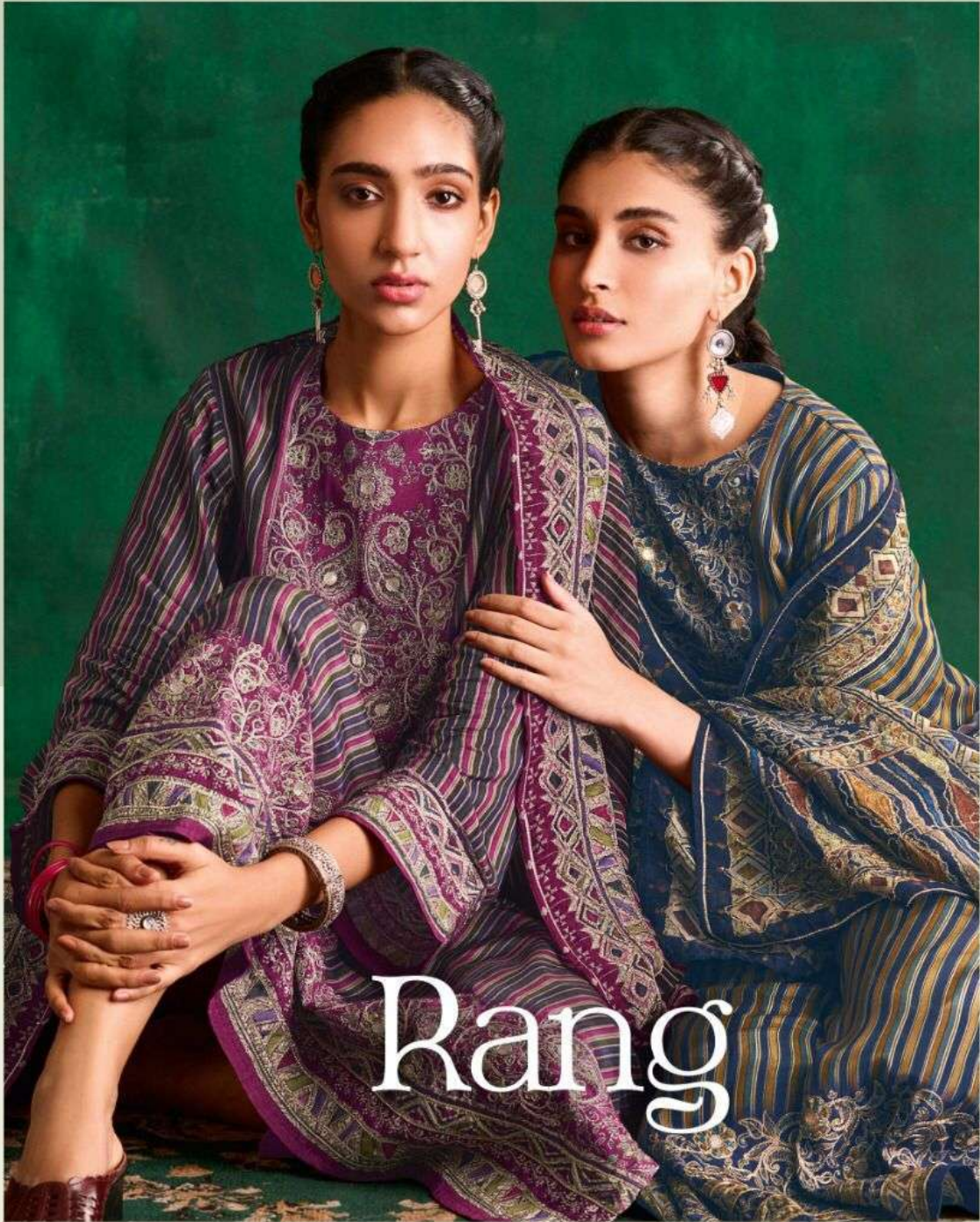


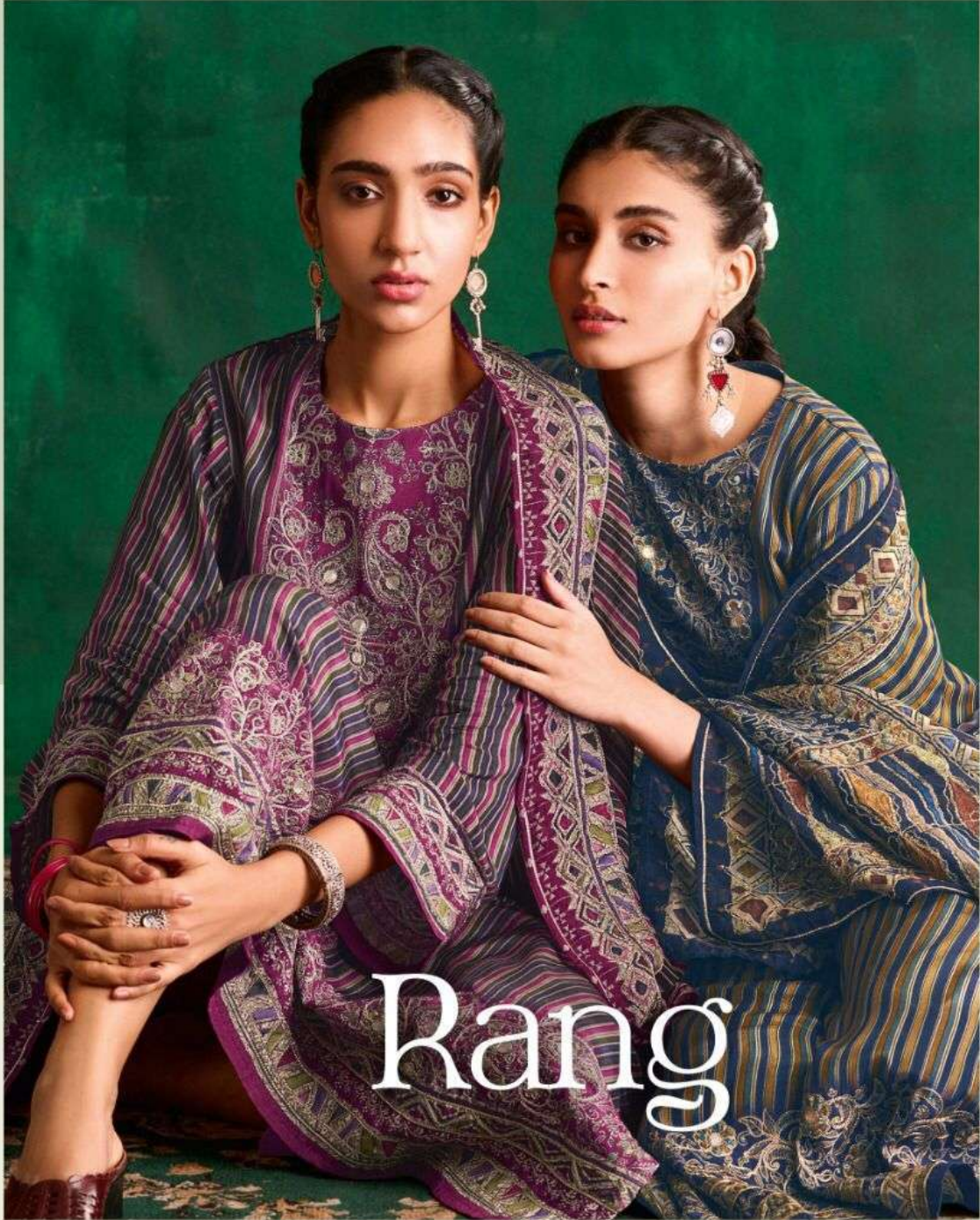
HEER
BY KIMORA



Rang

Coming Soon

HEER
BY KIMORA

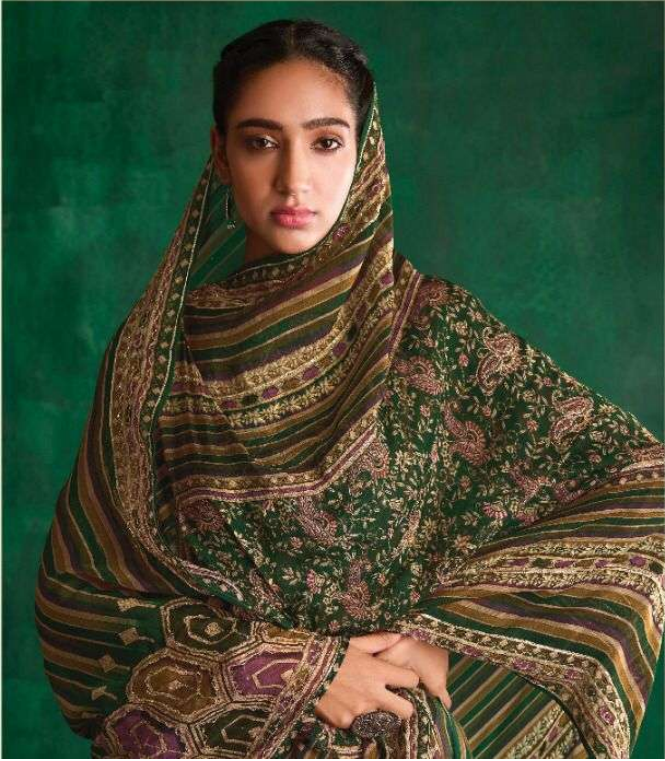


Rang

Coming Soon

HEER
BY KINORA

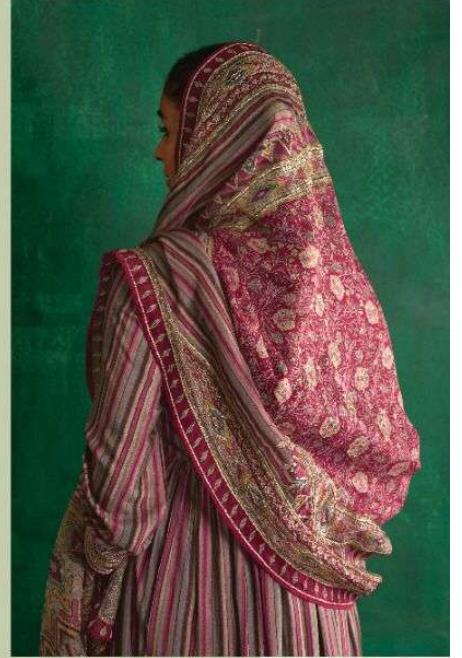
Rang



HEER
BY KIMORA



Rang



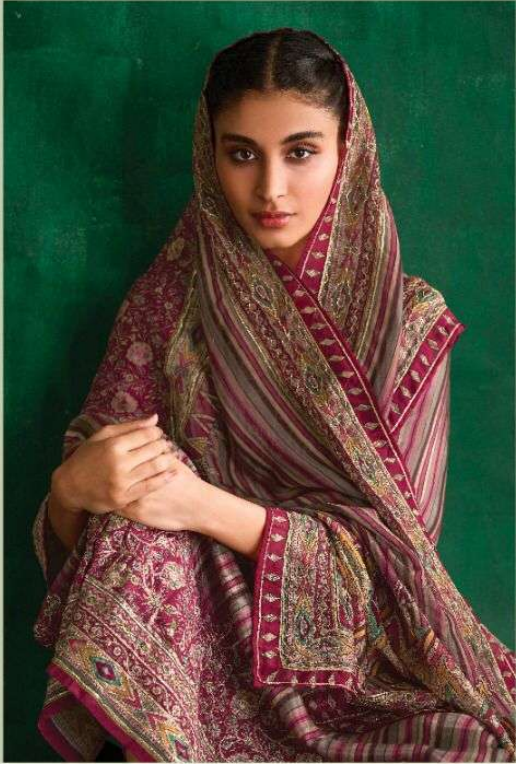
HEER
BY AHORA



8671



HEER
BY S.WORKA



8672



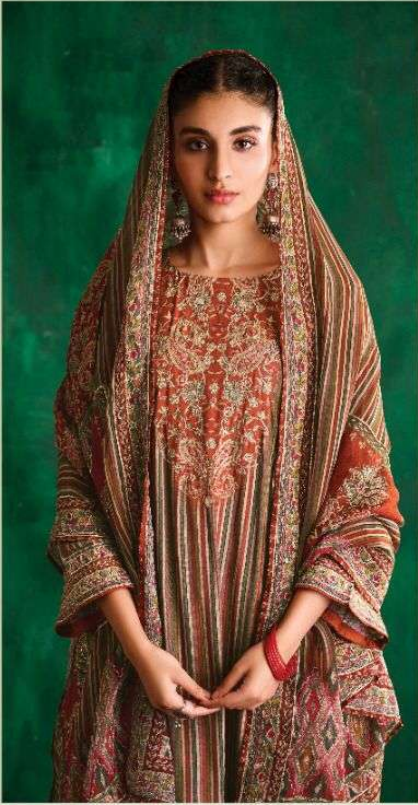
HEER
BY S. MODA



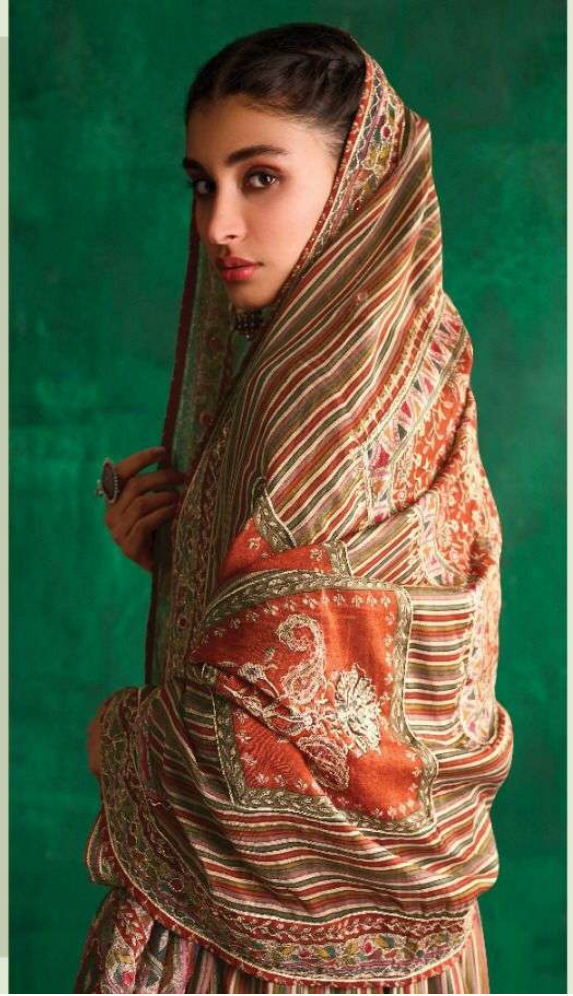
Rang



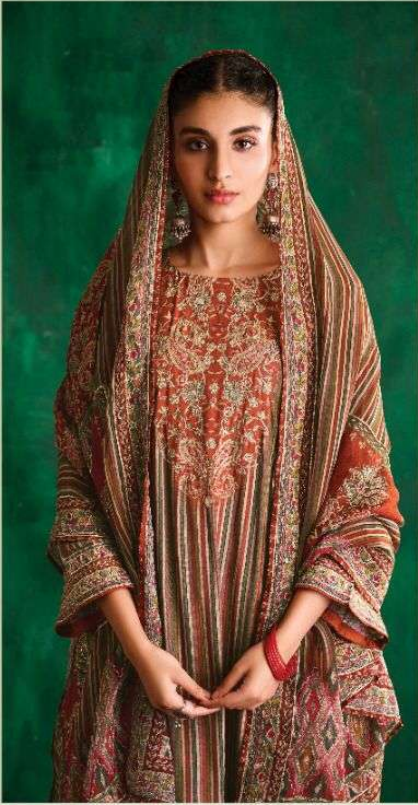
HOOR
BY KIMOKA



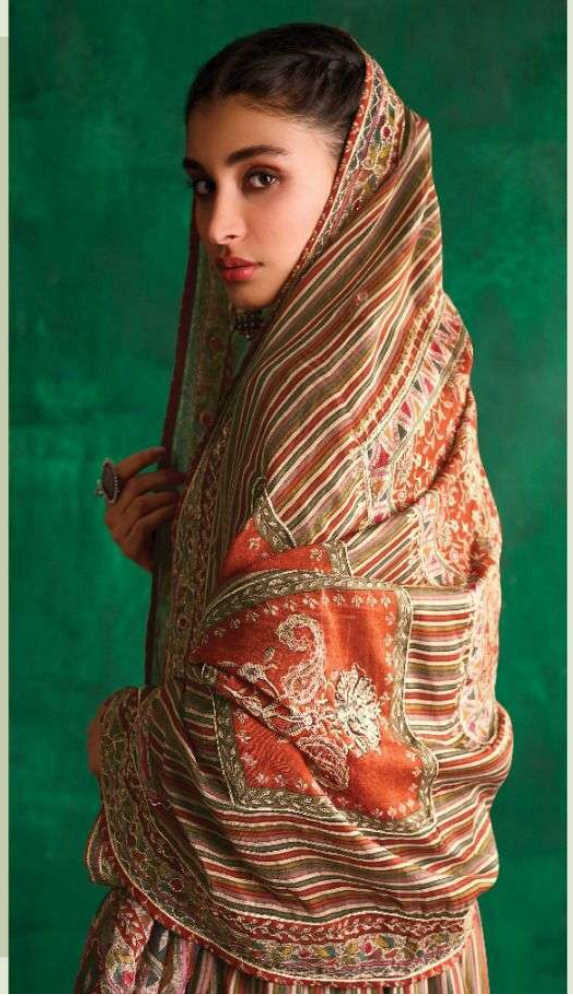
Rang



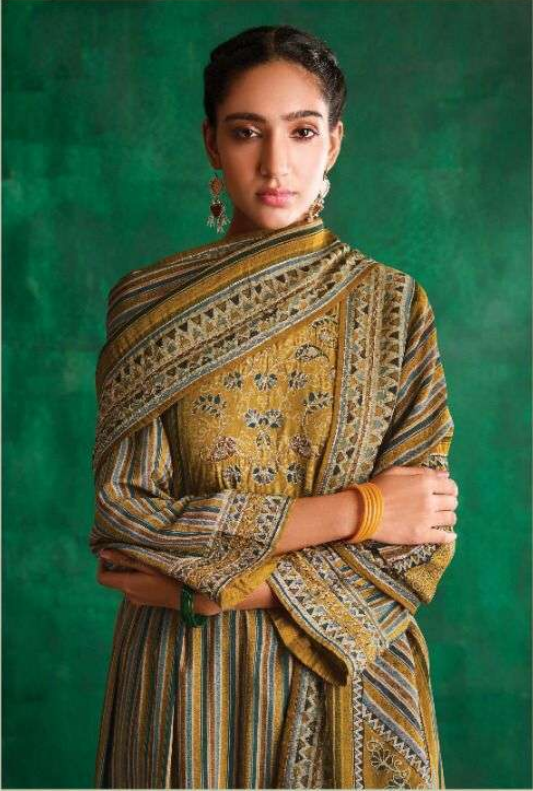
HOOR
BY KIMOKA



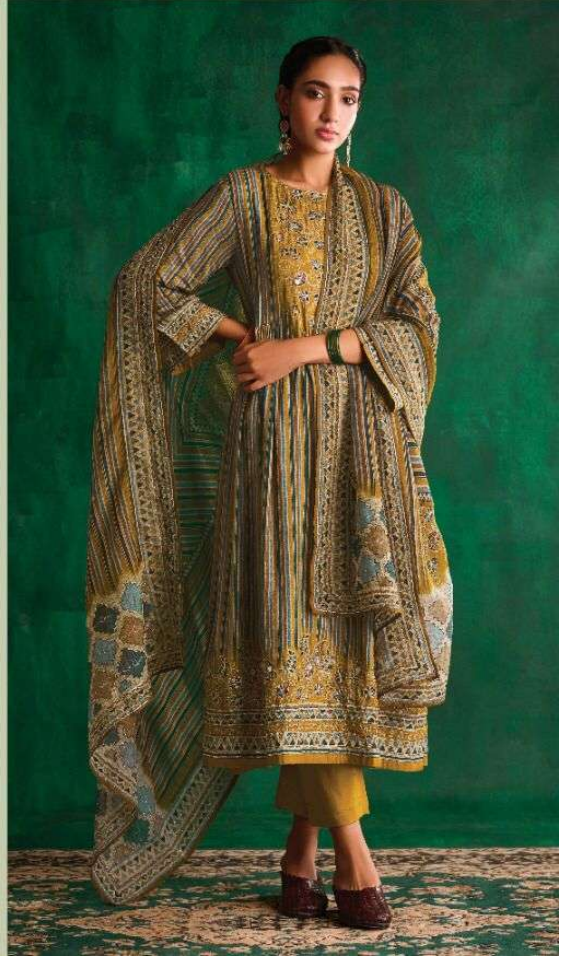
Rang

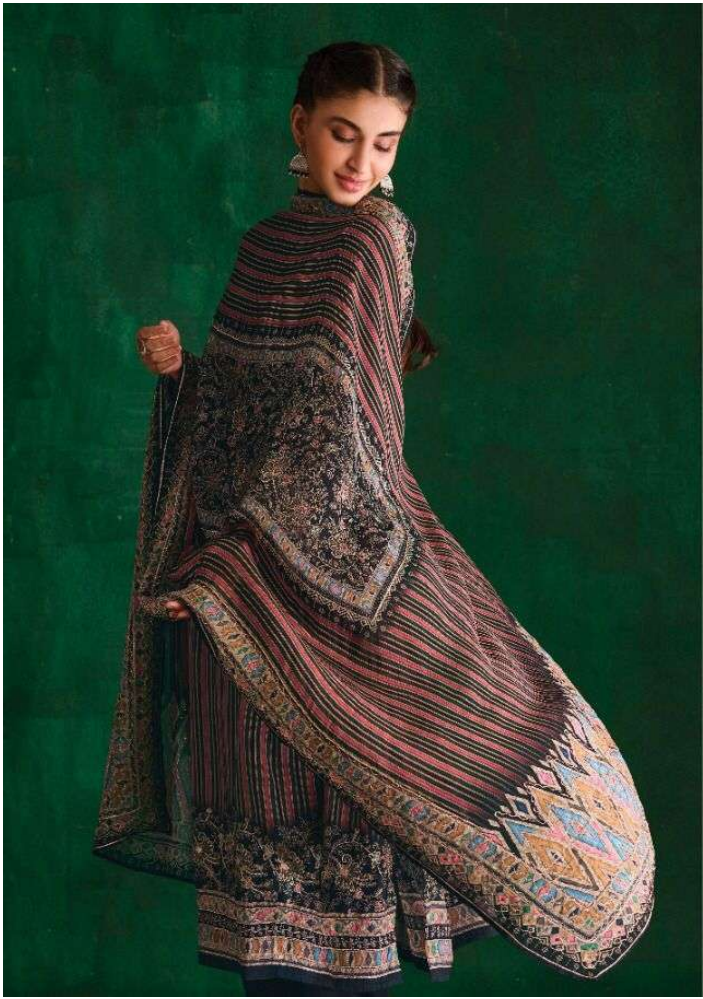


HEER
BY KUMODI

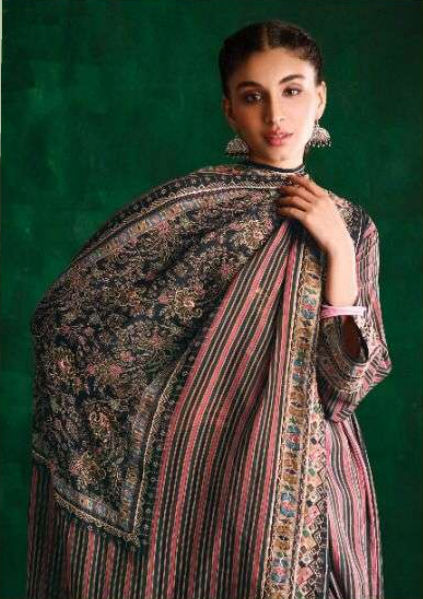


8673





HEER
BY KIMORA



Rang

The image is a promotional graphic for a clothing brand. It features a smaller version of the woman and her outfit from the first image, centered within a light green rectangular frame. At the top of the frame, the brand name "HEER" is written in a stylized, cursive font, with "BY KIMORA" in a smaller, sans-serif font below it. At the bottom right of the frame, the word "Rang" is written in a large, elegant, serif font.

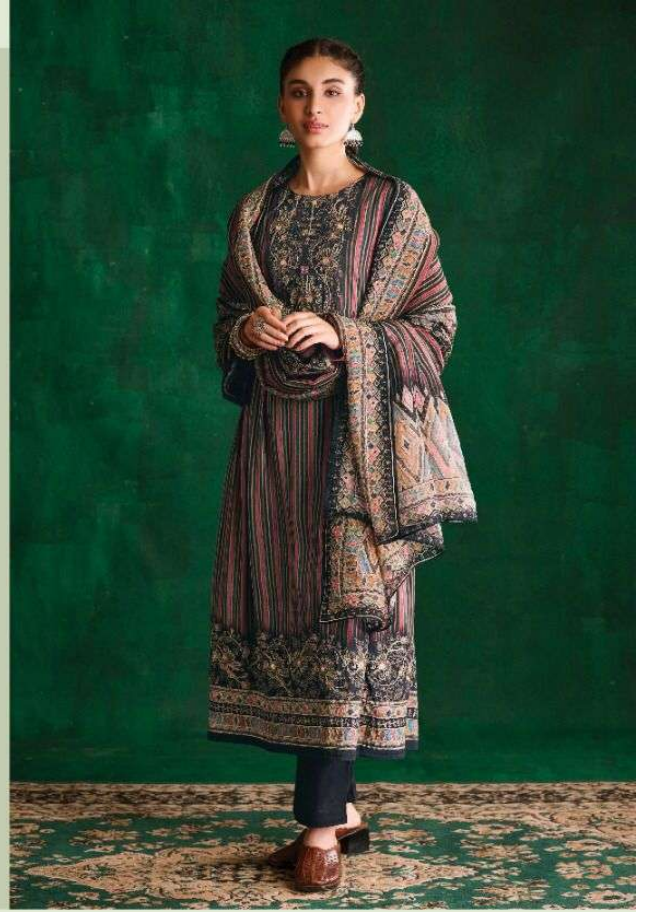
HEER
BY KINCRA



8674



HEER
BY K. HORA



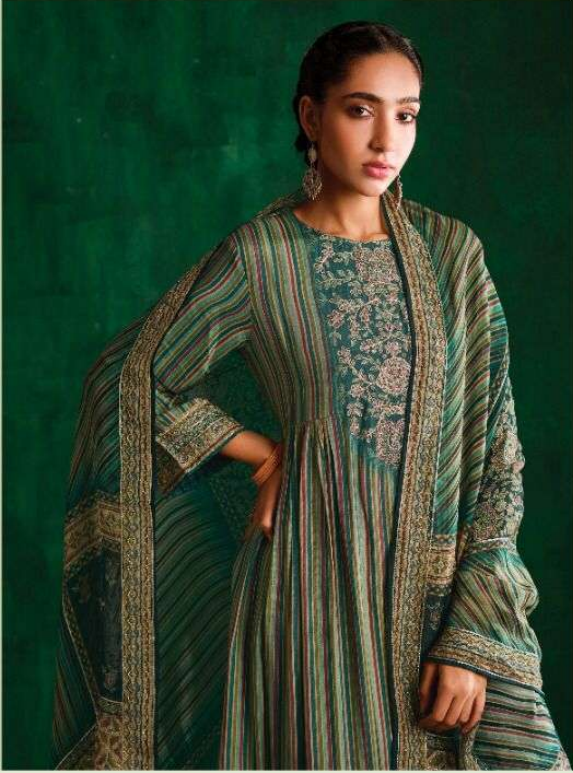
8675

HEER
BY KIMORA

Rang



HEER
BY KIMORA



8676

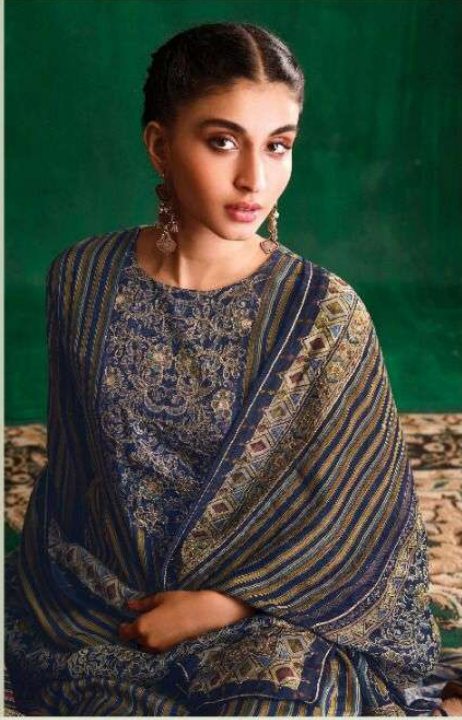
HEER
BY NIBROO



Rang



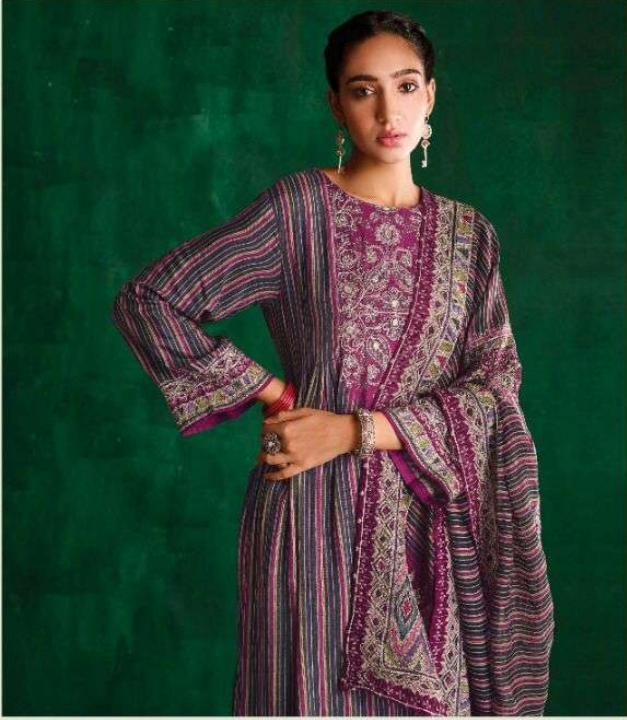
HEER
BY KIMORA



8677



Heer
BY KIMORA



8678



Rang

: TOP :

PURE CLASSIC SILK WITH DIGITAL PRINT AND HAND ARI
WORK ON NECKLINE, HEMLINE AND SLEEVES

: DUPATTA :

PURE ORGANZA SILK WITH DIGITAL PRINT AND
HAND ARI WORK

: BOTTOM :

PURE COTTON SATIN

.. DESIGN NO ..
8671 TO 8678

HEER

www.kimora.in





8671



8672



8673



8674



8675



8676



8677



8678

Rang