

maisha®



Queen of Hearts



masha  
*Intervention*

This sleek cut in fish dress has  
patterned back, along with  
colours, the flowers are  
sprinkled for added beauty.  
The attire is story

7103





maisha  
Glimmering  
Beauty

A beautifully embroidered  
ensemble featuring a long  
train to make the look  
elegant and sophisticated.

7101



maisha®

Peach  
*Passion*

This magnificent peach dress has a beautifully flared bottom. It is unique and perfect for all occasions.

7104



maisha

Shimmering  
*Glow*

This spectacular attire is rich, elegant and stands out. The soft hue, ruffles and the sheer work blend together perfectly.

7102

maisha  
Glimmering  
*Beauty*

A beautifully crafted netted  
dress made from the softest  
material to make the wearer look  
elegant and sophisticated.

7101





masha

Magnificent  
*Lady*

Our designers  
work hard to create their  
own designs and create it.  
Their amazing dress is an  
outlook to their  
efforts.

7104



Intervention  
*Divine*

This shawl, with its rich green hue, patterned lace, along with tassels, the flowers are sprinkled for added texture. The attire is size

7103

masha





maisha  
Woman in  
*Rose*

This rose gold attire is truly 'Woman in Rose' with its intricate woven pattern and elegant cut. It's sophisticated and fashionable.

7106









maisha  
Woman in  
*Rose*

This rose gold attire is  
rich in texture with its  
intricate silver pattern and  
unique cuts. It's sophisticated and  
handmade.

7106





maisha  
Woman in  
*Rose*  
This rose gold attire is  
rich in texture with its  
intricate lace pattern and  
unique cuts. It's sophisticated and  
handmade.  
7106



maisha

Pastel Purpose

This stunning green dress has an incredible border which has delicate embroidery done on it. It is sure to see famed designers.

7107





maisha

Beauty Queen

This beautiful dress has a shiny silver dress with a net jacket that will be perfect with the occasion. The reason is phenomenal.

7105



maisha

Beauty Queen

This beautiful dress has a shiny silver dress with a net jacket that will be perfect with the occasion. The reason is phenomenal.

7105





maisha  
Pastel  
Purpose

This stunning green dress has a detachable hood which has detailed embroidery that is a true masterpiece from the designer.

7107

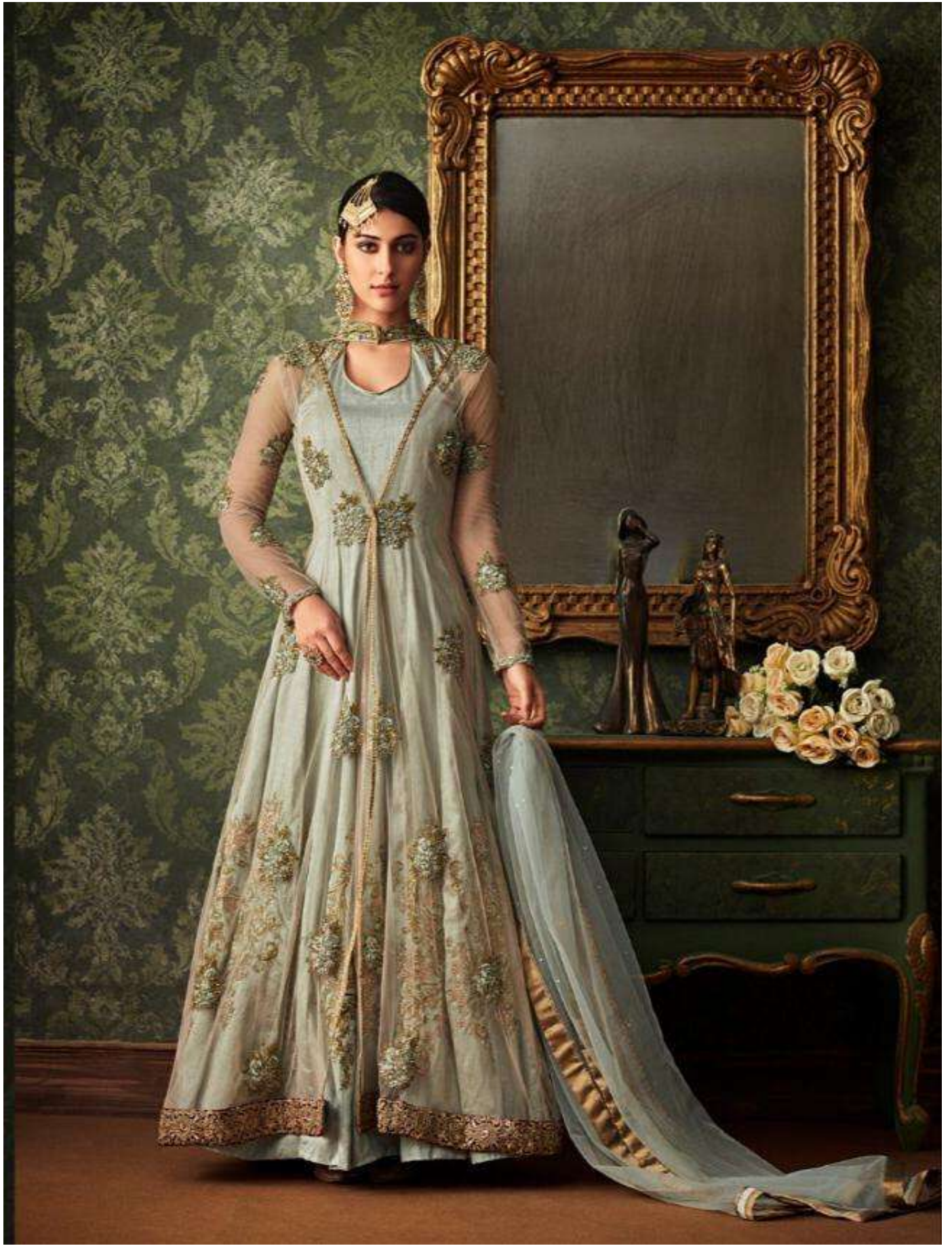


maisha  
Pastel  
Purpose

This stunning green dress has a detachable hood which has detailed embroidery that is a true masterpiece from the designer.

7107





maisha®



Star  
Struck

A collection of beautiful and  
elegant dresses. The silhouettes  
are contemporary and trendy.  
The fabrics are for the women  
of today.







masha®

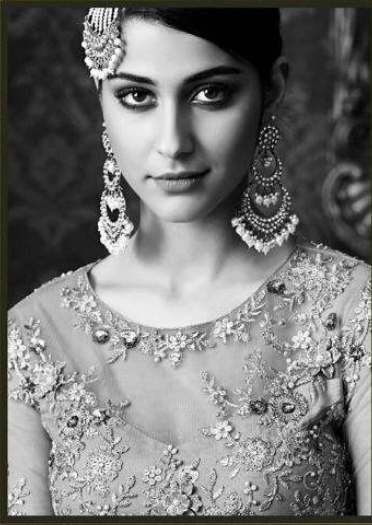
Shimmering  
*Glow*

This spectacular dress is rich,  
contemporary and timeless.  
The sapphire colour and  
the silver were hand  
together perfectly.

7102



maisha



Glimmering  
*Beauty*

A beautifully crafted netted  
dress made from the softest  
material to make the wearer look  
elegant and sophisticated.

7101





7101



7102



7103



7104



7105



7106



7107

masha®

maisha®

# Queen of Hearts



D.no	Top Fab	+Cut	Inner	+Cut	Bottom	+Cut	Dupt+inner	Rate
7101	Rangoli	+4mtr	Santoon	+3mtr	Santoon	+2.5mtr	2.25mtr	2770/-
7102	Rangoli	+5.25mtr	Santoon	+3mtr	Santoon	+2.5mtr	2.25mtr	2430/-
7103	BanrsiSilk	+5.7mtr	Santoon	+3mtr	Santoon	+2.5mtr	2.25mtr	2565/-
7104	Net	+10mtr	Satin	+4mtr	Santoon	+2.5mtr	2.25mtr	2630/-
7105	Silk/Net	+4.5/4.75 mtr	Santoon	+3mtr	Santoon	+2.5mtr	2.25mtr	3500/-
7106	JakardNet	+5mtr	Santoon	+4mtr	Santoon	+2.5mtr	2.25mtr	2050/-
7107	Rangoli/Net	+4/6mtr	Santoon	+3mtr	Santoon	+2.5mtr	2.25mtr	2948/-

Total Design 7 pcs.

Average Rate : 2699/-

Total Amount : 18893/-