

A woman with long brown hair is seated on a wooden chair with a floral patterned cushion. She is wearing a light blue, long-sleeved dress with intricate white lace detailing and floral embroidery. Her hands are adorned with red henna. In the foreground, a brass teapot and a glass are visible on a tray. The background shows a window with a view of greenery.

**ROUCH** VOL-07



D.NO.802



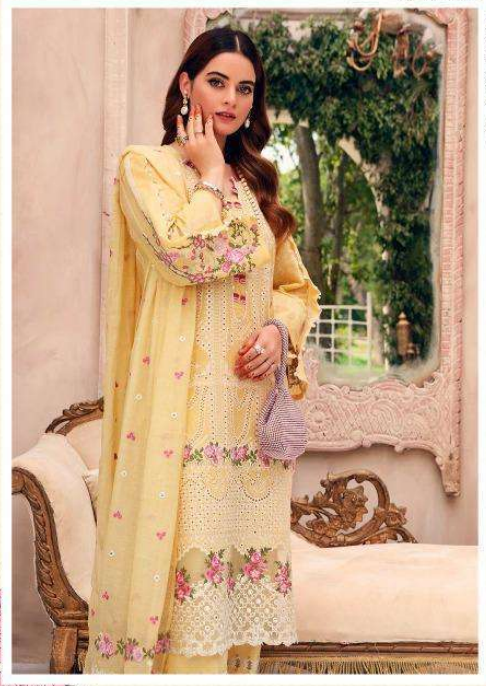
Saniya  
TRENDS



D.NO.805

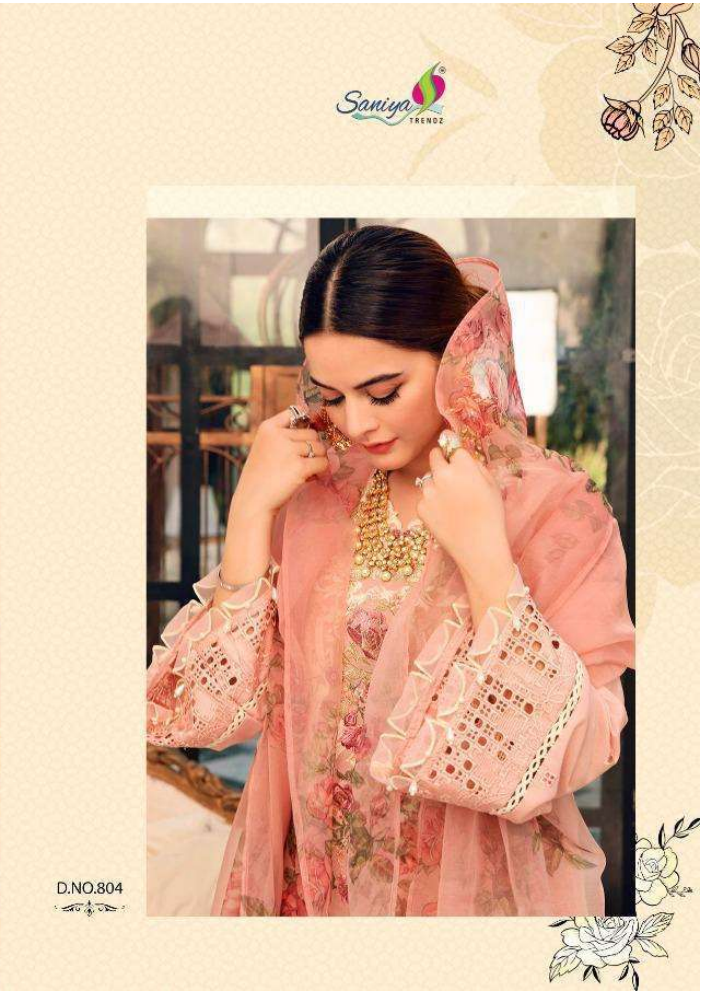


Saniya  
TRENDS



D.NO.801





D.NO.804



Saniya  
TRENDS



D.NO.803





Saniya  
TRENDS



D.NO.806





D.NO.801



D.NO.802



D.NO.803



D.NO.804



D.NO.805



D.NO.806