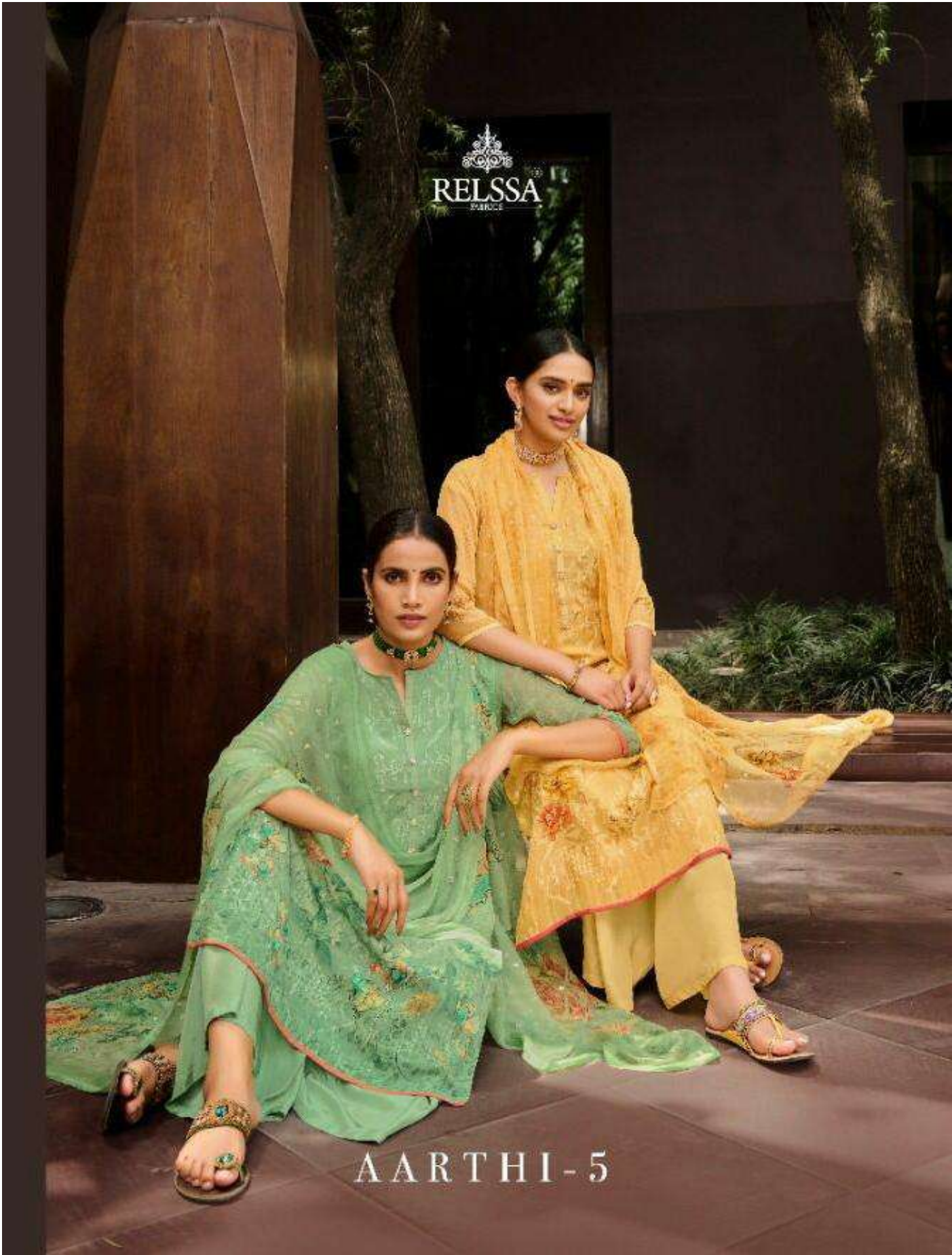


RELSSA
FABRICS

AARTHI-5



A woman is standing outdoors in a lush green setting, wearing a traditional Indian saree. The saree is a light beige or cream color, heavily embroidered with large, vibrant floral motifs in shades of pink, red, and orange. The embroidery is dense and covers most of the saree's surface. She is also wearing a matching beige blouse with a high collar and a long, flowing dupatta that is also embroidered with the same floral pattern. Her accessories include a gold bangle on her right wrist, a large, ornate ring on her right hand, and gold earrings. She is wearing simple, light-colored sandals. The background features a stone pillar and some greenery.

RELISSA[®]
FABRICS

AARTHI-5

15008



RELISSA[®]
FABRICS

AARTHI-5

15006





RELISSA[®]
FABRICS

AARTHI-5

15004





RELISSA[®]
FABRICS

AARTHI-5

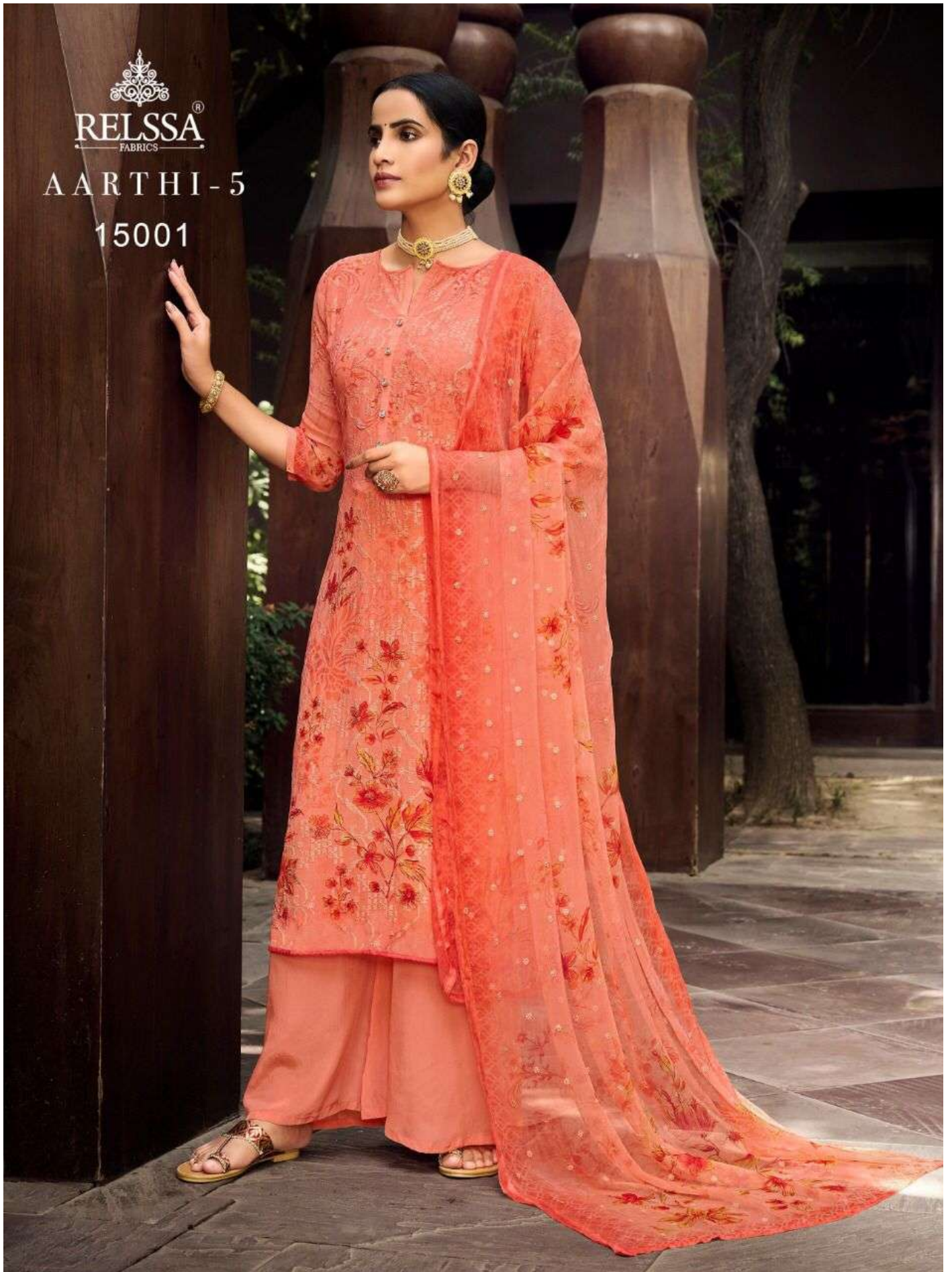
15002




RELSSA[®]
FABRICS

AARTHI-5

15001



RELISSA[®]
FABRICS

AARTHI-5
15007





RELISSA[®]
FABRICS

AARTHI-5

15003





RELISSA[®]
FABRICS

AARTHI-5

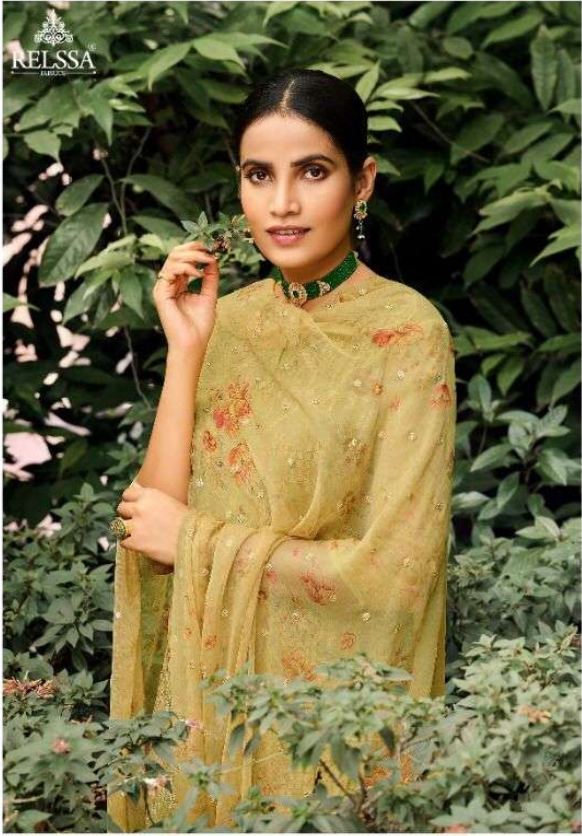
15005




RELISSA
INDIA







15007









RELISSA
BY
SANGHVI



15002







15001

15002

15003

15004



15005

15006

15007

15008





15006



RELISSA
AARTHI-5



15001



15002



15003



15004



15005



15006



15007



15008