

ZARQASH[®]
A BRAND BY Karmayoc

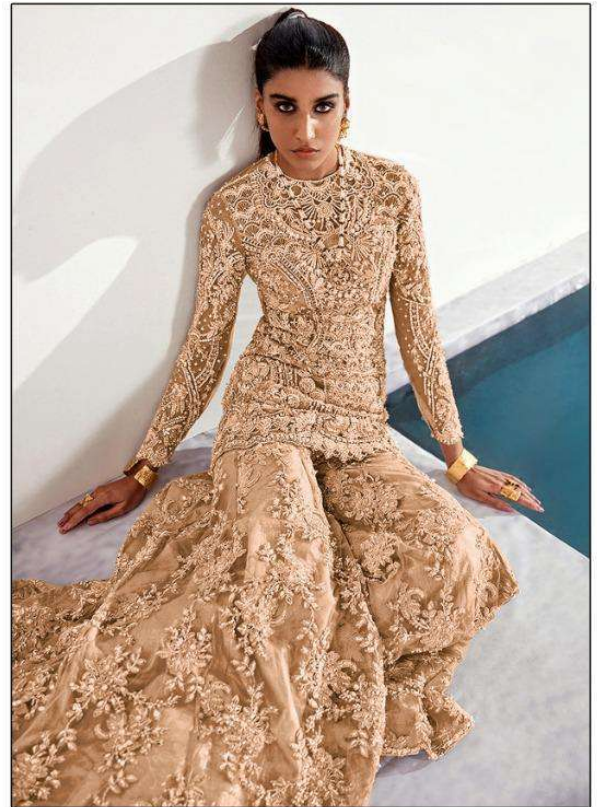
D.NO.Z-2052 B



ZARQASH[®]
A BRAND BY Kalyan

D.NO.Z-2052 B





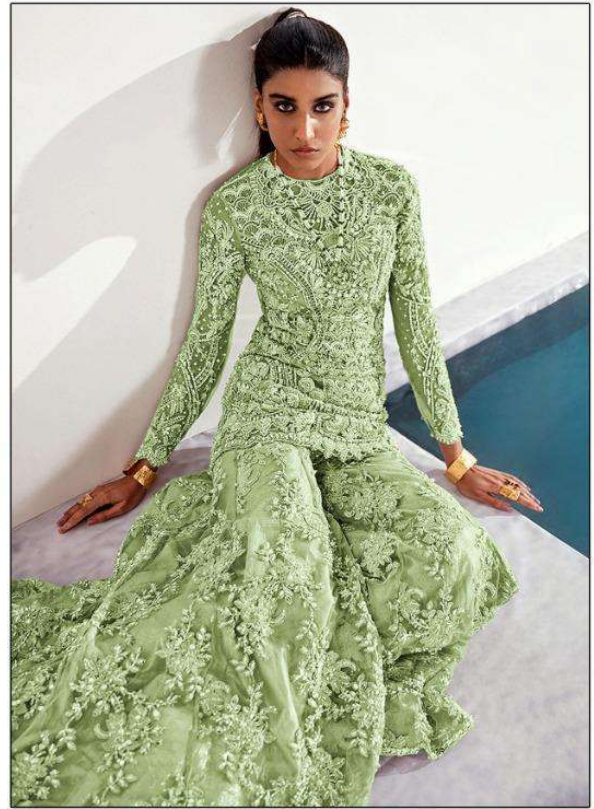
TOP - BUTTERFLY NET HEAVY EMBROIDERED UNSTITCH
T/B INNER - HEAVY SANTOON
BOTTOM - BUTTERFLY NET HEAVY EMBROIDERED
DUPATTA - BUTTERFLY NET HEAVY EMBROIDERED



**TOP - BUTTERFLY NET HEAVY EMBROIDERED UNSTITCH
T/B INNER - HEAVY SANTOON
BOTTOM - BUTTERFLY NET HEAVY EMBROIDERED
DUPATTA - BUTTERFLY NET HEAVY EMBROIDERED**



TOP - BUTTERFLY NET HEAVY EMBROIDERED UNSTITCH
T/B INNER - HEAVY SANTOON
BOTTOM - BUTTERFLY NET HEAVY EMBROIDERED
DUPATTA - BUTTERFLY NET HEAVY EMBROIDERED



TOP - BUTTERFLY NET HEAVY EMBROIDERED UNSTITCH
T/B INNER - HEAVY SANTOON
BOTTOM - BUTTERFLY NET HEAVY EMBROIDERED
DUPATTA - BUTTERFLY NET HEAVY EMBROIDERED



ZARQASH
A BRAND BY KOSMOS

D.NO.Z-2052 A



TOP - BUTTERFLY NET HEAVY EMBROIDERED UNSTITCH
T/B INNER - HEAVY SANTOON
BOTTOM - BUTTERFLY NET HEAVY EMBROIDERED
DUPATTA - BUTTERFLY NET HEAVY EMBROIDERED





ZARQASH

3.NO.2-2022 A

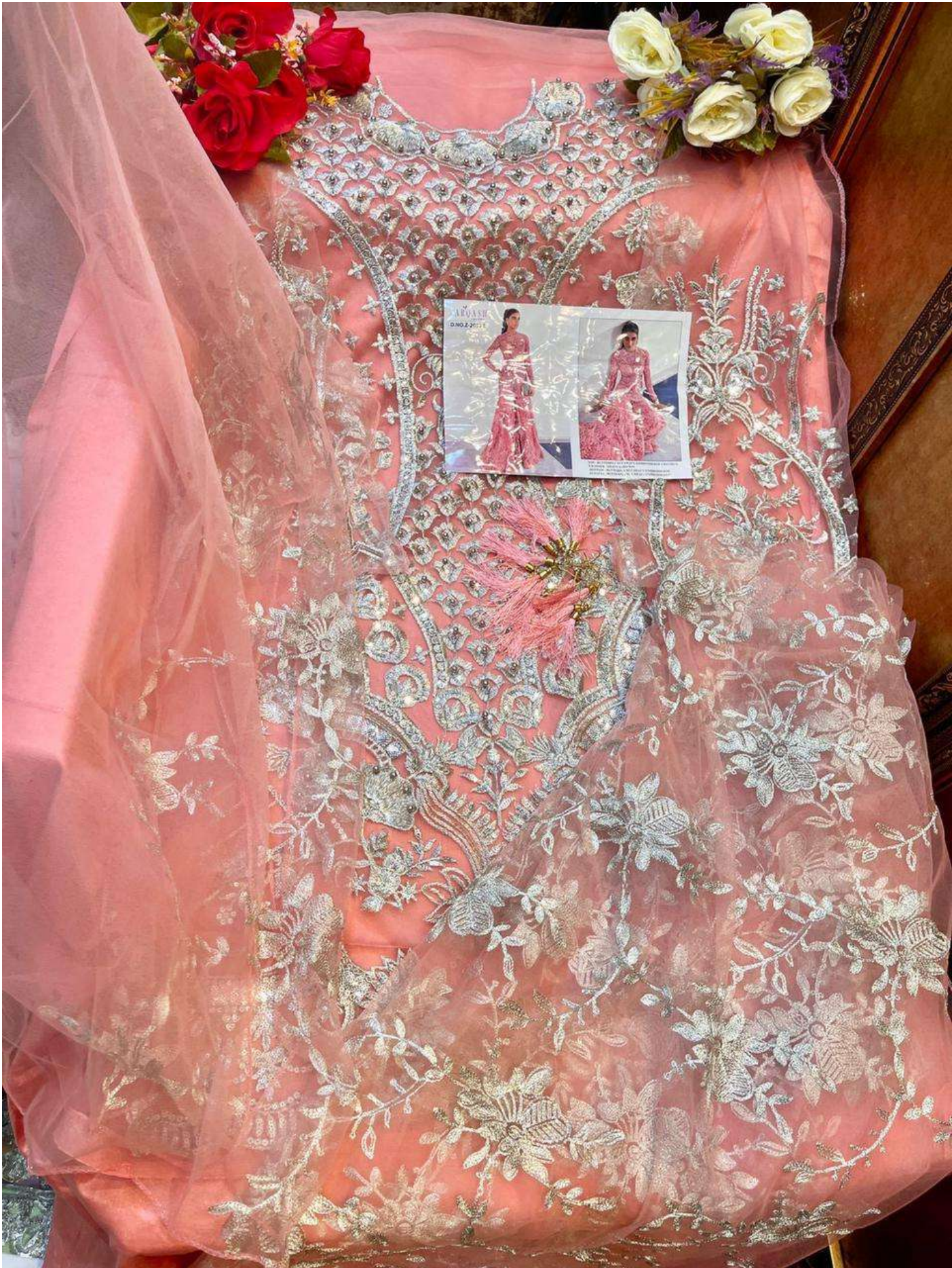




ZARQASH
ID NO. Z-2012 C

Two photographs of a woman wearing the dress, one in a full-length view and one in a three-quarter view.







D.NO.Z-2052 A



D.NO.Z-2052 B



D.NO.Z-2052 C



D.NO.Z-2052 D



D.NO.Z-2052 E

TOP - BUTTERFLY NET HEAVY EMBROIDERED UNSTITCH
T/B INNER - HEAVY SANTOON
BOTTOM - BUTTERFLY NET HEAVY EMBROIDERED
DUPATTA - BUTTERFLY NET HEAVY EMBROIDERED